



Engine	Cummins B6.7
Max. Gross	183 kW (245 hp / 249 ps) @ 1,700 rpm
Max. Net	172 kW (231 hp / 234 ps) @ 1,700 rpm
Operating Weight	20,234 kg
Standard Bucket Size	3.5 m ³
Standard Breakout Force	147 kN
Standard Dump Clearance	2,663 mm

856T WHEEL LOADER

ENGINE

Emission Regulation	EU Stage V
Manufacturer	Cummins
Model	B6.7
Max. Gross	183 kW (245 hp / 249 ps) @ 1,700 rpm
Max. Net	172 kW (231 hp / 234 ps) @ 1,700 rpm
Peak Torque	1,186 N·m @ 1,300 rpm
Displacement	6.7 L
Number of Cylinders	6
Aspiration	Turbocharged & Air-to-air intercooled

TRANSMISSION

Transmission Type	Countershaft, powershift
Torque Converter	Single stage, three elements
Maximum Travel Speed, fwd	37.7 km/h
Maximum Travel Speed, rev	25 km/h
Number of Speed, fwd	4
Number of Speed, Rev	3

AXLES

Differential Front Type	Limited slip
Differential Rear Type	Limited slip
Axle Oscillation	±12°

STEERING

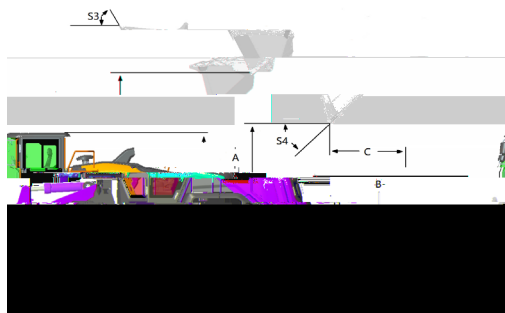
Steering Hydraulic System	Flow amplifying
Steering Relief Pressure	20.7 MPa

BRAKES

Service Brake Type	Wet discs brake
Service Brake Actuation	Full hydraulic
Parking Brake Type	Drum
Parking Brake Actuation	Electro-hydraulic release

HYDRAULIC SYSTEM

Main Pump Type	Piston
Main Relief Pressure	30 MPa
Raise	5.1 s
Dump Time	1.5 s
Float Down Time	3.0 s
Hydraulic Cycle Time	9.6 s



LOADER ARM PERFORMANCE WITH STANDARD BUCKET 3.5 m³

Tipping Load - Straight (ISO 14397-1:2007)	13,209 kg
Tipping Load - Full Turn (ISO 14397-1:2007)	11,618 kg
Bucket Breakout Force	147 kN
A Maximum Hinge Pin Height	4,107 mm
B Dump Clearance at Full Height Discharge	2,663 mm
C Dump Reach at Full Height Discharge	1,462 mm
D Maximum Digging Depth, Bucket Level	153 mm
S ₁ Rollback at Ground Level	42.7°
S ₂ Bucket Rollback at Carry	48°
S ₃ Bucket Rollback at Maximum Height	63°
S ₄ Maximum Dump Angle at Full Height	45°

BUCKET PERFORMANCE

Reference Bucket	2.7-5.6 m³
------------------	------------

DIMENSIONS

E Ground Clearance	421 mm
G Wheelbase	3,370 mm
H Cab Height	3,410 mm
J Wheel Tread	2,150 mm
K Width over Tires	2,750 mm
L Length with Bucket Down	8,622 mm
M Turn Angle, Either Side	38°
P Rear Angle of Departure	28°
R ₁ Turning Radius, Bucket Carry	7,101 mm
R ₂ Turning Radius, Outside of Tire	6,304 mm
W Width over Bucket	2,920 mm

TIRES

Tire Size	23.5R25 L-3
-----------	-------------

OPERATING WEIGHTS

Operating Weight	20,234 kg
------------------	-----------

SERVICE CAPACITY

Fuel Tank	330 L
Engine Oil	20 L
DEF Tank	30 L
Cooling System	35 L
Hydraulic System	205 L
Transmission and Torque Converter	35 L
Axles, Front/Rear	50 L / 50 L

